

GRU AUTOMONTANTI IDRAULICHE
SELF ERECTING CRANES
GRUES MONTAGE RAPIDE
SELBSTMONTIERENDE HYDRAULIKKRÄNE
КРАНЫ ГИДРАВЛИЧЕСКИЕ САМОМОНТИРУЮЩИЕСЯ

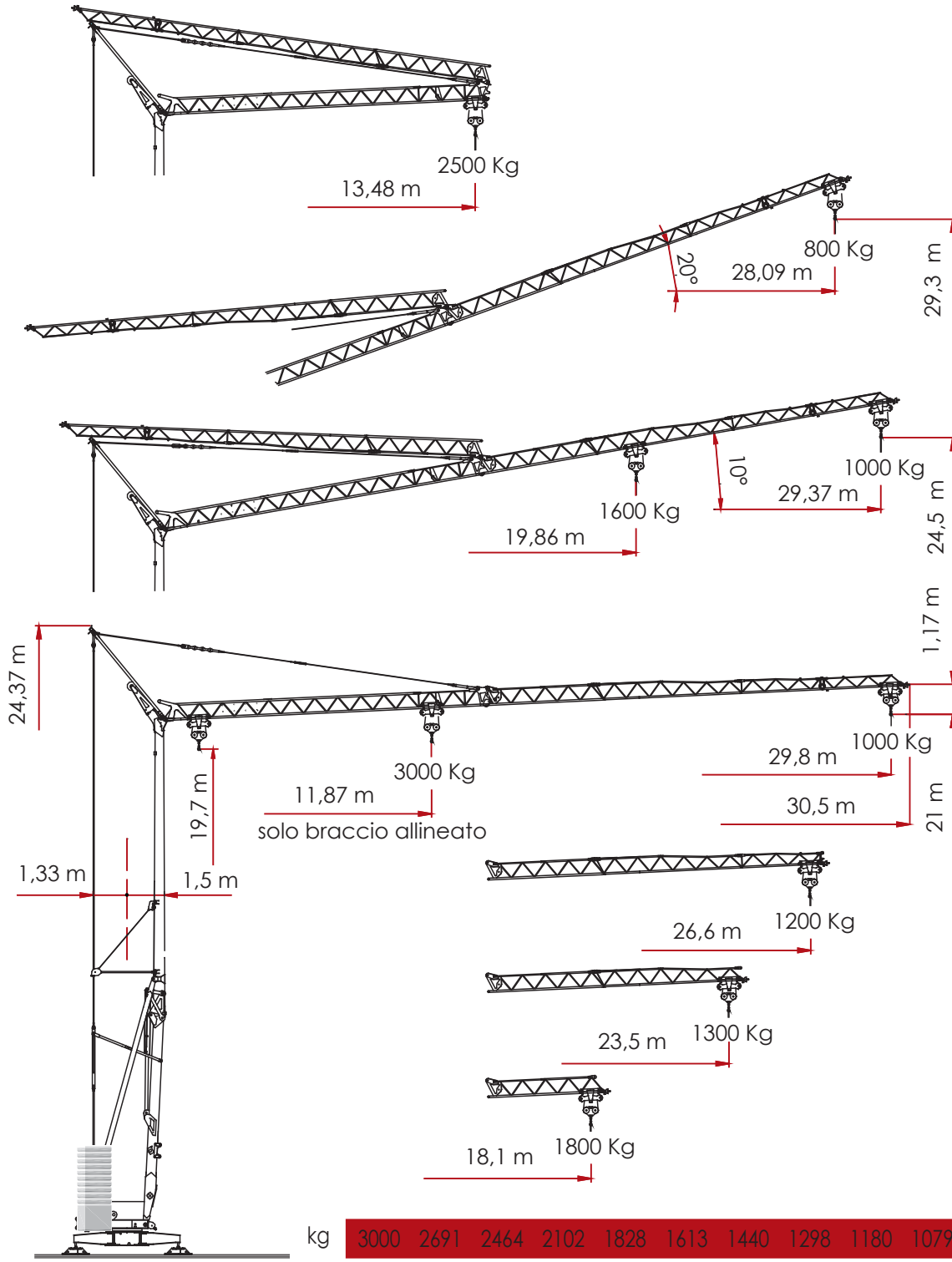
CE 
H1B3-DIN15018
CRANES
EST
TIGLS **VICARIO**





CONFIGURAZIONE - REAZIONI - HR30

CONFIGURATION - REACTIONS/CONFIGURATION - RÉACTIONS/ KONFIGURAZION – REAKTIONEN /
 КОНФИГУРАЦИЯ КРАНА




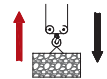
kg	3000	2691	2464	2102	1828	1613	1440	1298	1180	1079	1000
m	11.87	13	14	16	18	20	22	24	26	28	29.8

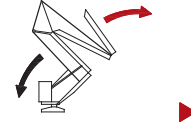


CARATTERISTICHE AZIONAMENTI PRINCIPALI

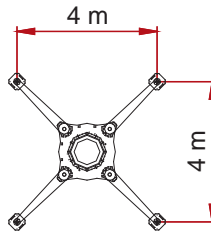
MAIN DRIVE CHARACTERISTICS / CARACTÉRISTIQUES ACTIONNEMENTS PRINCIPAUX / HAUPTBEDIENUNGSEIGENSCHAFTEN / ХАРАКТЕРИСТИКА ГЛАВНЫХ ПРИВОДОВ

 400 V (+10% - 10%) 50 Hz 12 kVA

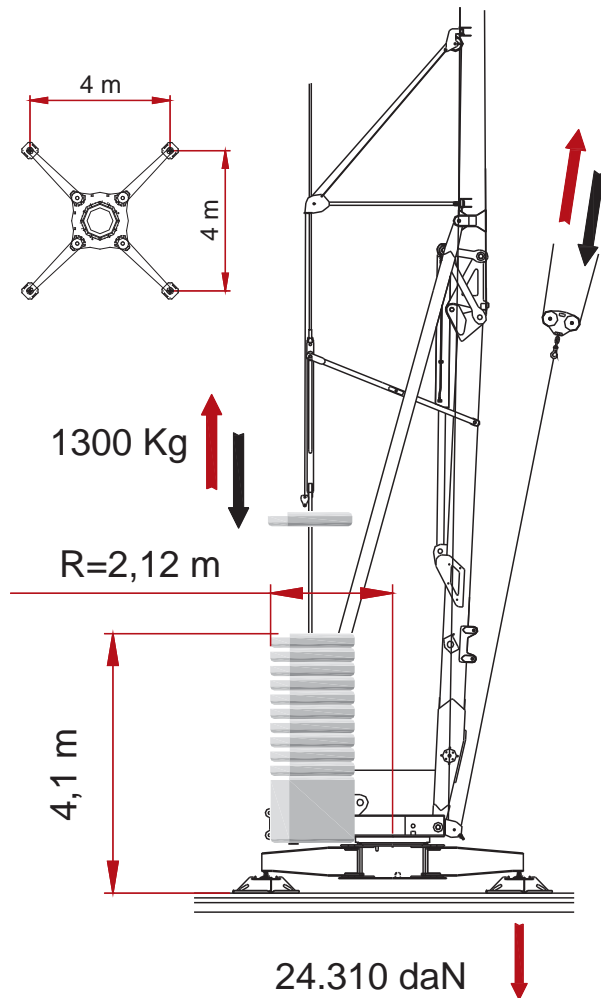
	▶	▶▶	▶▶▶	▶▶▶▶
m/l'	8	20	46	56
kg	3000	3000	1200	800
kW	11 (Inverter)			



	▶	▶▶	▶▶▶
g/l'	17.8	28.6	53.5 (→ 39.3)
kW	3 (Inverter)		



	▶	▶▶	▶▶▶
m/l'	0.15	0.42	0.84
kW	3 (Inverter)		



	▶	▶▶
12.700 Kg.	5.200 Kg. + 13.000 Kg.	

F [daN]

SFORZI MASSIMI
AL PIEDE

MAX STRESSES
AT THE FOOT

EFFORTS MAX.
AU PIED

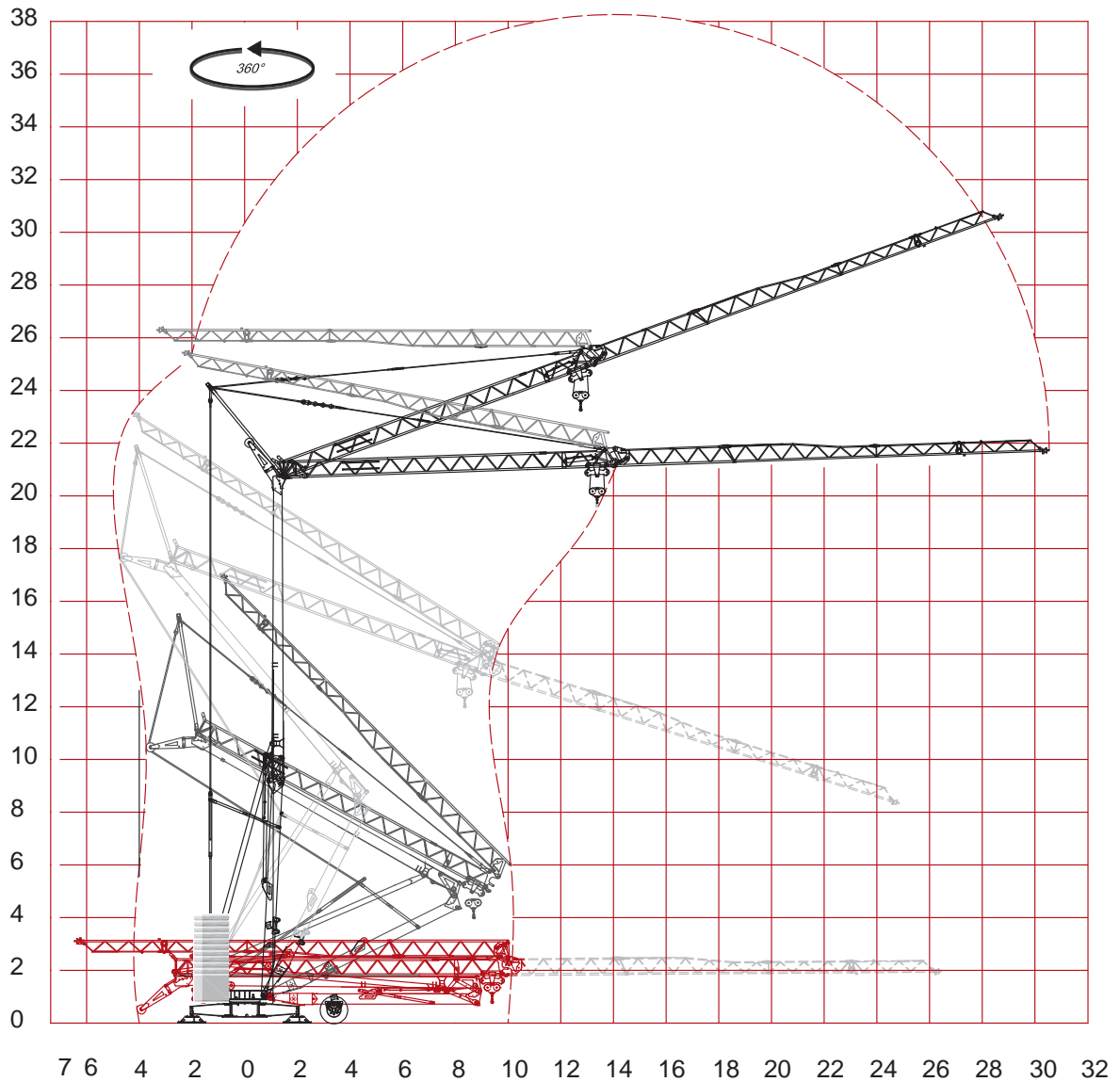
MAX. BEANSPRU
CHUNG AM FUSS

МАКС. УСИЛИЯ НА
ПОДНОЖИЕ



SEQUENZA DI MONTAGGIO SU 360°

ERECTION PROCEDURE ON 360° / DÉRULEMENT DE MONTAGE SUR 360° / AUFSTELLVORGANG UBER 360° / ХАРАКТЕРИСТИКА ГЛАВНЫХ ПРИВОДОВ

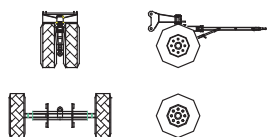
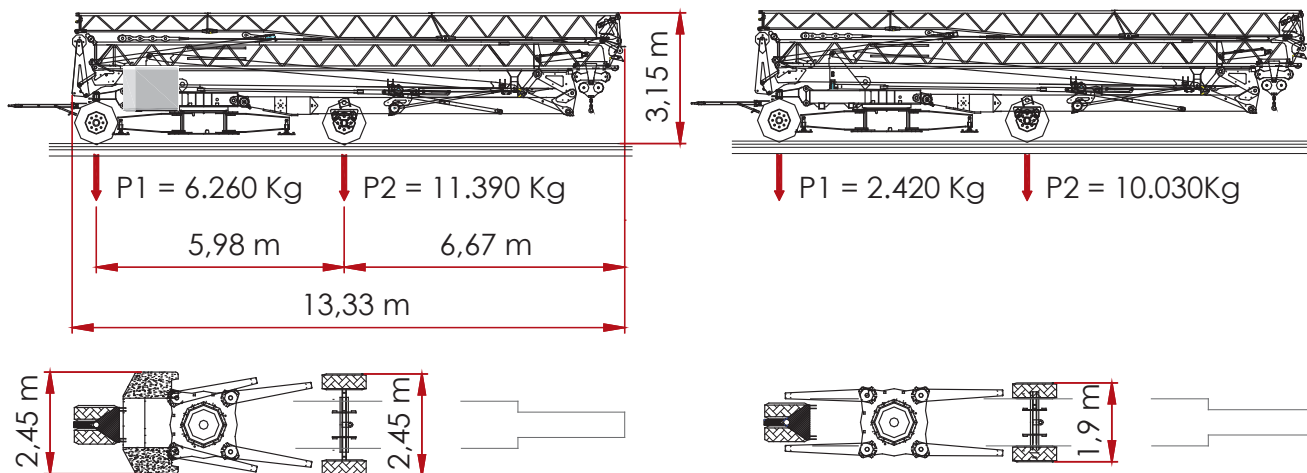


GRU AUTOMONTANTI IDRAULICHE

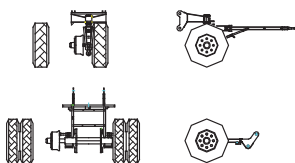
SELF ERECTING
CRANESGRUES MONTAGE
RAPIDESELBSTMONTIRENDE
HYDRAULIKKRÄNEКРАНЫ ГИДРАВЛИЧЕСКИЕ
САМОМОНТИРУЮЩИЕСЯ

SOLUZIONE DI TRAINO

TRACK LOAD PLAN / PLAN DE CHARGEMENT / SCHLEPPLÖSUNG / ВАРИАНТ БУКСИРОВКИ



4 x 385-R 22.5



Freni - Brakes - Freins
Bremse - Frenos





INFO

RAIMONDICRANES S.p.A.
CORSO GARIBALDI n° 253
20025 LEGNANO [MI] - ITALY

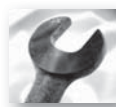
HR 30 [REV. 00.2010] ADL / TECHNICAL DEPARTEMENT
I DATI OGGETTO DELLA PRESENTE SCHEDA POTREBBERO
SUBIRE MODIFICHE SENZA PRAAVVISO



PROJECT

☎ 0039. 0331.548061
☎ 0039. 0331.450400

DISTRIBUTORE .DEALER .DISTRIBUTEUR .VERTEILER .ДИЛЕР



S.A.T.

☎ 0039.0331.548061.258



www.raimondicranes.com
info@raimondicranes.com



RAIMONDI CRANES
Building Tower Cranes Since 1946