



GRU AUTOMONTANTI IDRAULICHE  
SELF ERECTING CRANES  
GRUES MONTAGE RAPIDE  
SELBSTMONTIERENDE HYDRAULIKKRÄNE  
КРАНЫ ГИДРАВЛИЧЕСКИЕ САМОМОНТИРУЮЩИЕСЯ



H1B3-DIN15018

CRANES  
AND  
TOOLS **VICARIO**

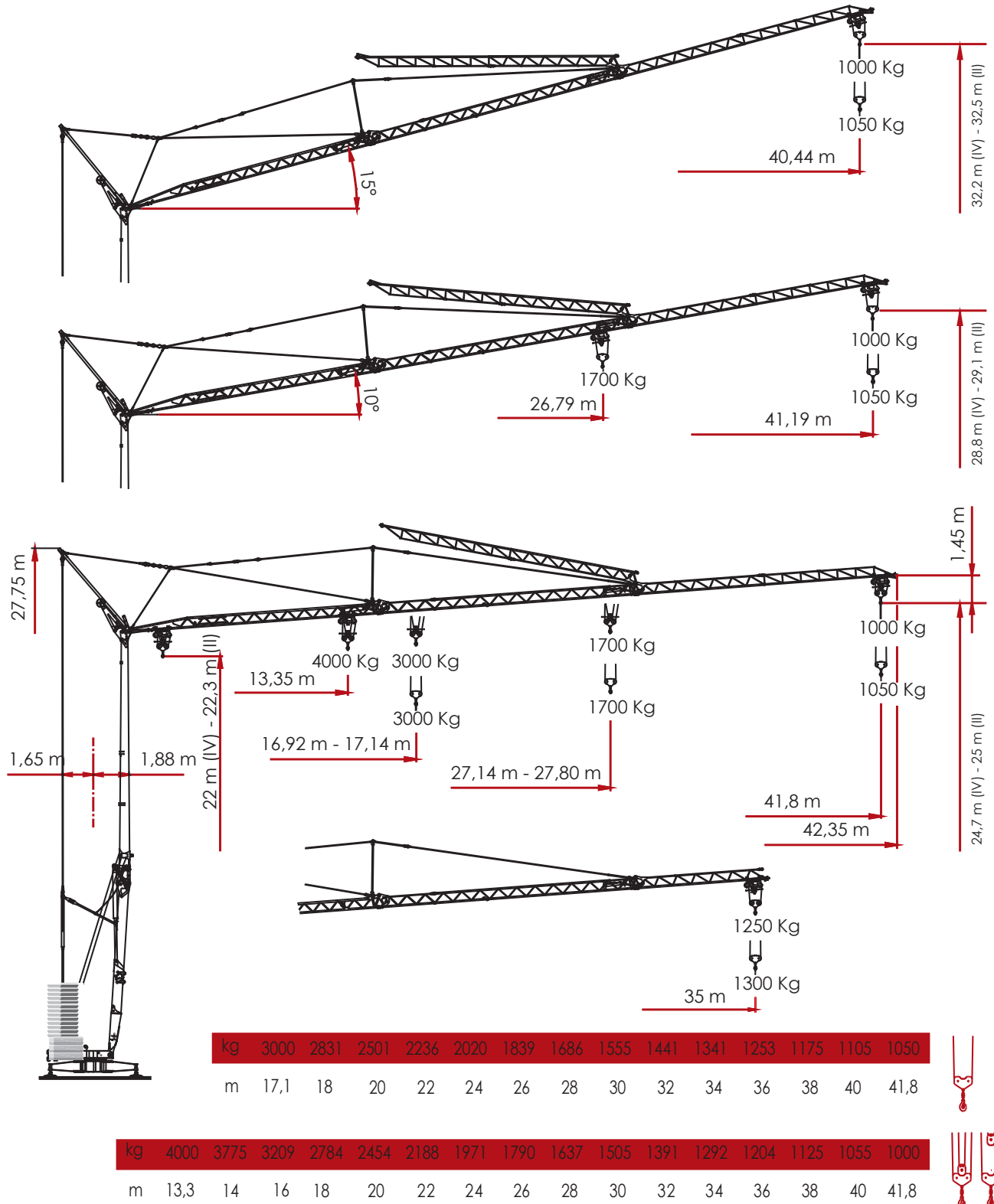


**RAIMONDI CRANES**  
Building Tower Cranes Since 1946




**CONFIGURAZIONE - REAZIONI - HR42**

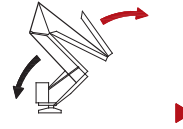
CONFIGURATION - REACTIONS / CONFIGURATION - RÉACTIONS / KONFIGURAZION – REAKTIONEN / КОНФИГУРАЦИЯ КРАНА

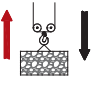


## CARATTERISTICHE AZIONAMENTI PRINCIPALI

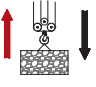
MAIN DRIVE CHARACTERISTICS / CARACTÉRISTIQUES ACTIONNEMENTS PRINCIPAUX / HAUPTBEDIENUNGSEIGENSCHAFTEN / ХАРАКТЕРИСТИКА ГЛАВНЫХ ПРИВОДОВ

 400 V (+10% - 10%) 50 Hz 12 kVA



	▶	▶▶	▶▶▶	▶▶▶▶	
m/l'	8	20	46	56	
kg	3000	3000	1200	800	
kW	11 (Inverter)				

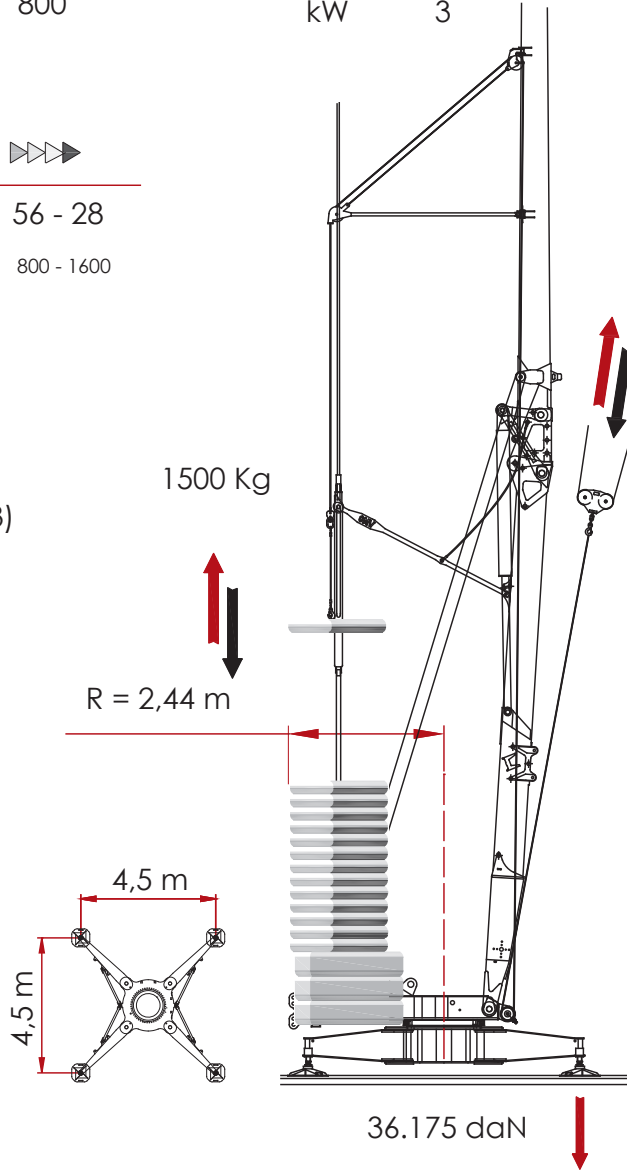
min 14  
kW 3

	▶	▶▶	▶▶▶	▶▶▶▶	
m/l'	8 - 4	20 - 10	46 - 23	56 - 28	
kg	2000 - 4000	2000 - 4000	1200 - 2400	800 - 1600	
kW	11 (Inverter)				

	▶	▶▶	▶▶▶	
g/l'	17.3	28.6	53.5 (↔ 39.3)	
kW	3 (Inverter)			

	▶	▶▶	▶▶▶	
m/l'	0.15	0.38	0.75	
kW	3 (Inverter)			

	18.500 Kg.	8.100 Kg. + 19.500 Kg.
---	------------	------------------------

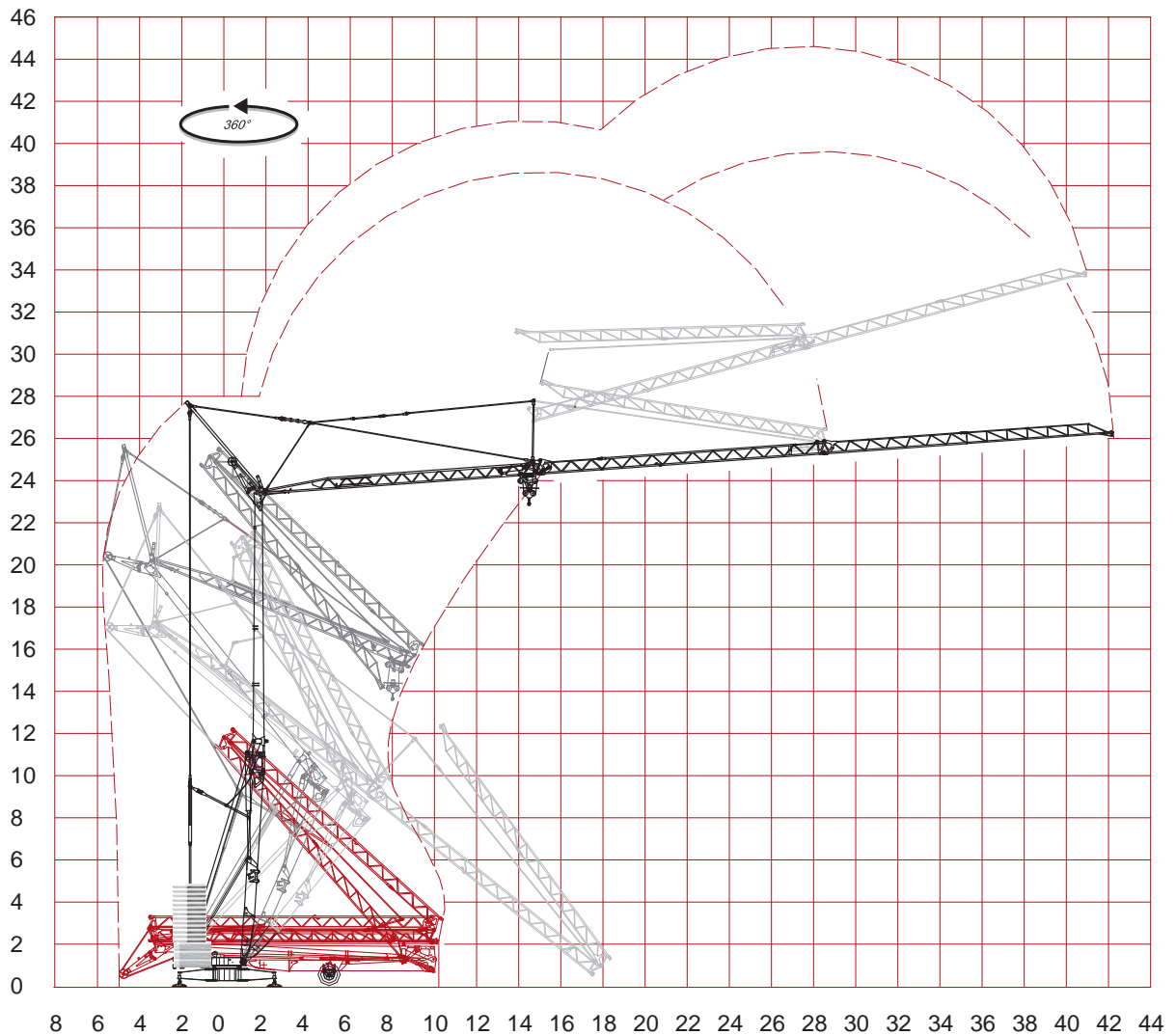


F [daN]

SFORZI MASSIMI AL PIEDE	MAX STRESSES AT THE FOOT	EFFORTS MAX. AU PIED	MAX. BEANSPRU CHUNG AM FUSS	МАКС. УСИЛИЯ НА ПОДНОЖИЕ
----------------------------	-----------------------------	-------------------------	--------------------------------	-----------------------------

**SEQUENZA DI MONTAGGIO SU 360°**

ERECTION PROCEDURE ON 360° / DÉRULEMENT DE MONTAGE SUR 360° / AUFSTELLVORGANG UBER 360° / ХАРАКТЕРИСТИКА ГЛАВНЫХ ПРИВОДОВ

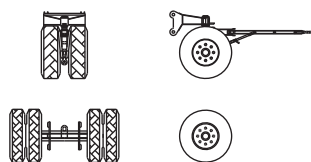


GRU AUTOMONTANTI IDRAULICHE

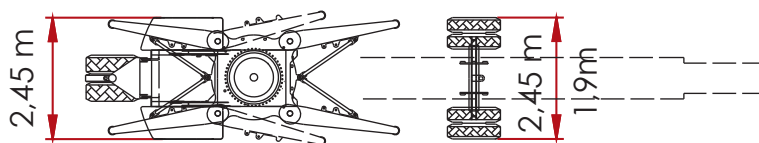
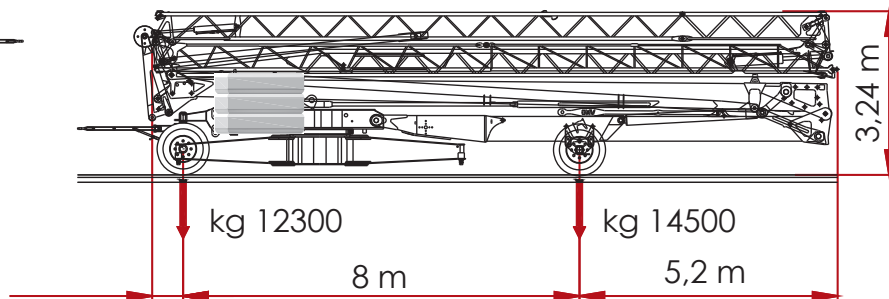
SELF ERECTING  
CRANESGRUES MONTAGE  
RAPIDESELBSTMONTIRENDE  
HYDRAULIKKRÄNEКРАНЫ ГИДРАВЛИЧЕСКИЕ  
САМОМОНТИРУЮЩИЕСЯ

## SOLUZIONE DI TRAINO

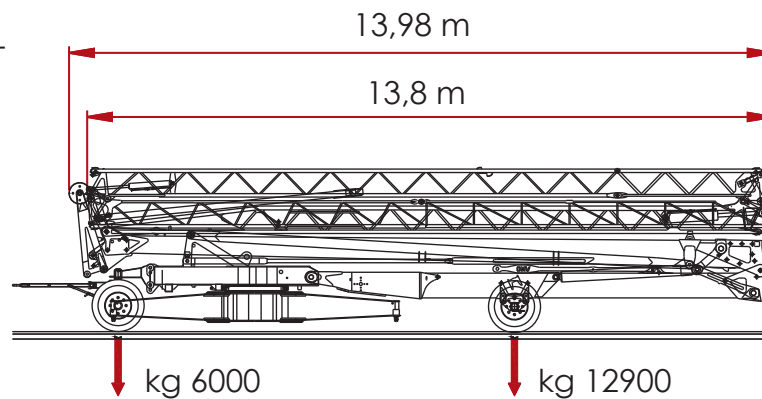
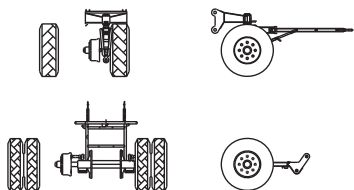
TRACK LOAD PLAN / PLAN DE CHARGEMENT / SCHLEPPLÖSUNG / ВАРИАНТ БУКСИРОВКИ



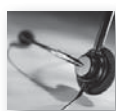
2 x 385-R 22.5  
4 x 315-R 22.5



Freni - Brakes - Freins -  
Bremse - ТОРМОЗ







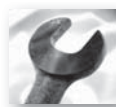
## INFO

**RAIMONDICRANES S.p.A.**  
CORSO GARIBALDI n° 253  
20025 LEGNANO [MI] - ITALY



## PROJECT

☎ 0039. 0331.548061  
📠 0039. 0331.450400



## S.A.T.

☎ 0039.0331.548061.258



[www.raimondicranes.com](http://www.raimondicranes.com)  
[info@raimondicranes.com](mailto:info@raimondicranes.com)

HR 42 [ REV. 00.2010 ] ADL / TECHNICAL DEPARTEMENT  
I DATI OGGETTO DELLA PRESENTE SCHEDA POTREBBERO  
SUBIRE MODIFICHE SENZA PREAVVISO

DISTRIBUTORE .DEALER .DISTRIBUTEUR .VERTEILER .ДИЛЕР

---



**RAIMONDI CRANES**  
Building Tower Cranes Since 1946