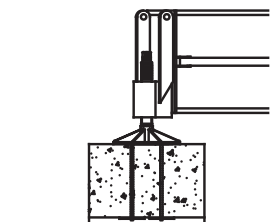
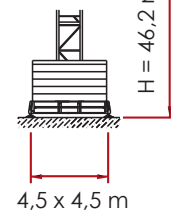


UL = ULTRALIFT
H = Altezza sotto gancio
 Height under hook
 Hauteur sous crochet
 Höhe unter dem Haken
 Высота под крюком

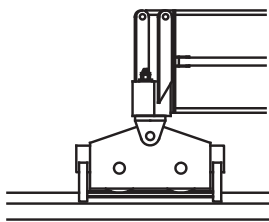


A4FEM1.001

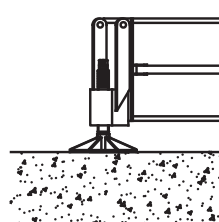
E



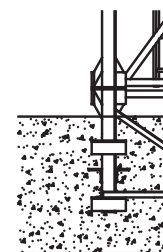
A



B



C



D



MRT96

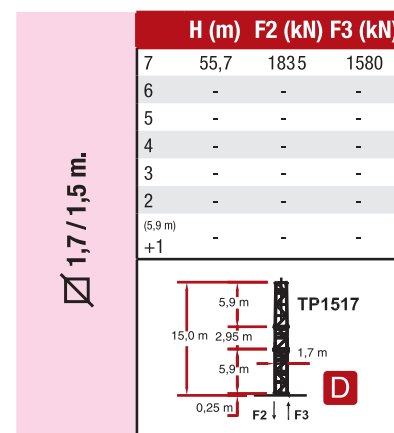
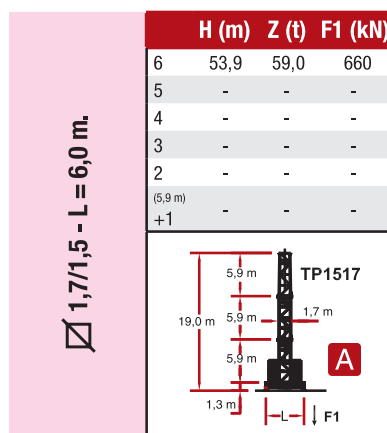
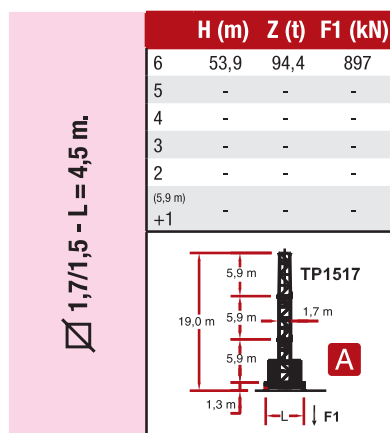
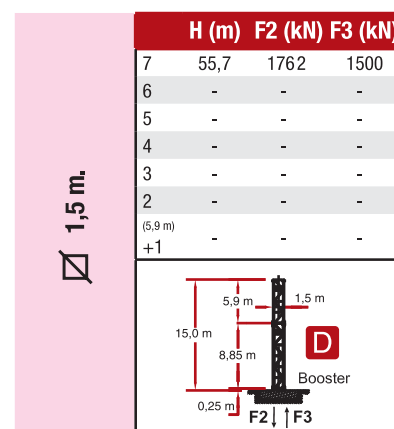
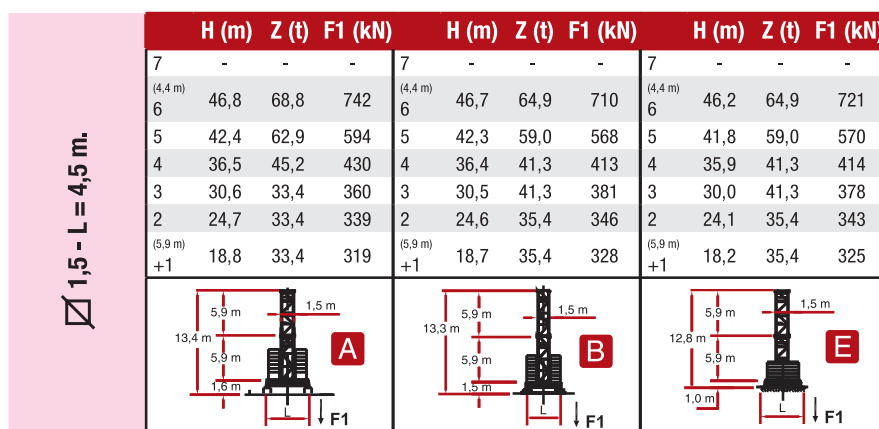
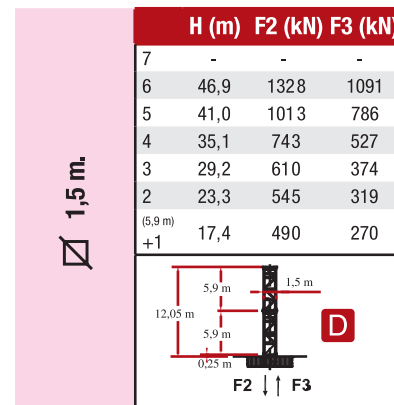
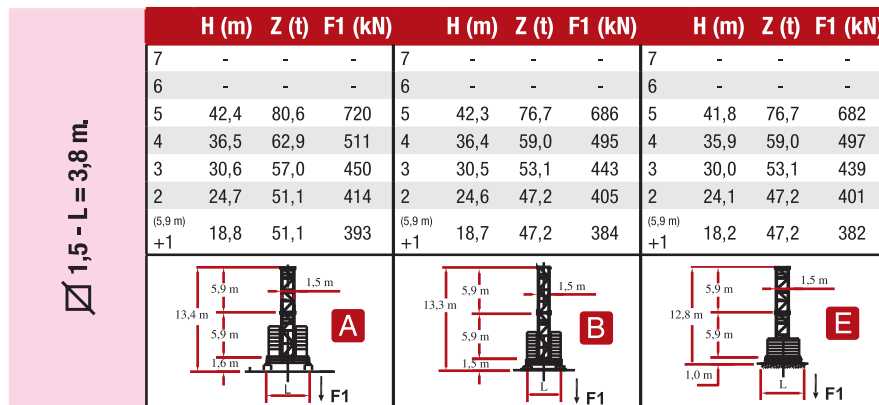
GRU DA CITTÀ SENZA CUSPIDE . TOP LESS CITY CRANE .



RAIMONDI CRANES
Building Tower Cranes Since 1946

CONFIGURAZIONE TORRE - REAZIONI

TOWER CONFIGURATION - REACTIONS / CONFIGURATION TOUR - RÉACTIONS /
 KONFIGURAZION MIT TURM – REAKTIONEN / КОНФИГУРАЦИЯ БАШНИ – РЕАКЦИИ






Attenersi alla zavorra indicata / Comply with the specified ballast / S'en tenir au lest
 indiqué / Unbedingt die angegebenen Ballastwerte einhalten / Соблюдать указанный балласт



DIAGRAMMA DI PORTATA

RANGE DIAGRAM / DIAGRAMME DE CHARGE UTILE / BELASTBARKEITSDIAGRAMM /

ДИАГРАММА ГРУЗОПОДЪЕМНОСТИ

	 3.000 Kg.							 6.000 / 3.000 Kg.							
	24	30	33	36	42	48	54	24	30	33	36	42	48	54	
1,6 ▶	24.0	33.0	32.6	32.1	30.2	29.8	26.5	17.8	17.4	17.5	19.1	16.2	15.9	14.0	
12	3000	3000	3000	3000	3000	3000	3000	6000	6000	6000	6000	6000	6000	6000	
14	3000	3000	3000	3000	3000	3000	3000	6000	6000	6000	6000	6000	6000	6000	
16	3000	3000	3000	3000	3000	3000	3000	6000	6000	6000	6000	6000	5855	5258	
18	3000	3000	3000	3000	3000	3000	3000	5674	5638	5606	5555	5378	5127	4599	
20	3000	3000	3000	3000	3000	3000	3000	5041	5008	4980	4933	4775	4550	4077	
22	3000	3000	3000	3000	3000	3000	3000	4526	4497	4471	4429	4285	4082	3653	
24	3000	3000	3000	3000	3000	3000	3000	4100	4073	4050	4011	3880	3694	3302	
26		3000	3000	3000	3000	3000	3000		3717	3695	3660	3539	3368	3006	
28		3000	3000	3000	3000	3000	2854		3413	3392	3360	3248	3089	2754	
30		3000	3000	3000	3000	2949	2637		3150	3131	3101	2996	2849	2537	
32			3000	2975	2877	2739	2437			2903	2875	2777	2639	2347	
33			2900	2872	2778	2644	2361			2800	2772	2678	2544	2261	
34				2776	2684	2554	2280				2676	2584	2454	2180	
36				2600	2513	2391	2132				2500	2413	2291	2032	
38					2361	2245	2000					2261	2145	1900	
40					2224	2114	1881					2124	2014	1781	
42					2100	1995	1774					2000	1895	1674	
44						1888	1677						1788	1577	
46						1790	1588						1690	1488	
48						1700	1507						1600	1407	
50							1432							1332	
52							1364							1264	
54							1300							1200	

UL [ULTRALIFT]

Con il sistema ULTRALIFT tutte le portate intermedie aumentano il carico del 10%

All intermediate loads are increased of 10% if the crane is equipped with ULTRALIFT control

Les charges intermediaires sont augmentes de 10% si la grue est équipée avec controle ULTRALIFT

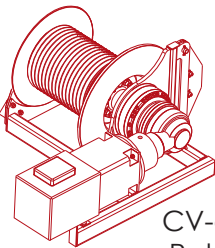





Mit dem ULTRALIFT-System erhöhen alle Zwischenbelastbarkeiten die Last um 10%

с системой ultralift все промежуточные грузоподъемности увеличиваются на 10%


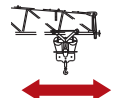
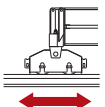


CARATTERISTICHE AZIONAMENTI PRINCIPALI

MAIN DRIVE CHARACTERISTICS / CARACTÉRISTIQUES ACTIONNEMENTS PRINCIPAUX /
HAUPTBEDIENUNGSEIGENSCHAFTEN / ХАРАКТЕРИСТИКА ГЛАВНЫХ ПРИВодОВ

 CV-ch Ps-hp	 380 VOLT ± 5%		 FUNE ROPE	 MARCIA STEP	 CARICO LOAD	 VELOCITÀ SPEED		
	POTENZA POWER	kW				m.	Kg.	m/min.
6,0 T 30 HP 3/6VF	30	22	240	1	3000	8	6000	4
				2	3000	22	6000	11
				3	3000	36	6000	18
				4	1500	56	3000	28
				5	1000	70	2000	35
				0 - 400 (*)	84 (*)	0 - 800 (*)	42	
6,0 T 40 HP 3/6VF	40	30	240 450 LB	1	3000	8	6000	4
				2	3000	24	6000	12
				3	3000	38	6000	19
				4	2000	60	4000	30
				5	1500	75	3000	37,5
				0 - 600 (*)	90 (*)	0 - 1200 (*)	45	

08 /05 - 2000 n. 2000/14/CE


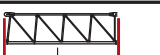



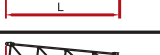
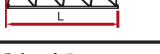



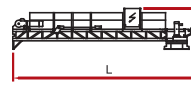

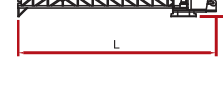
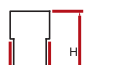

	ROTAZIONE SLEWING	0,23 / 0,47 / 0,71 min ⁻¹	P = 2X4 kW
	CARRELLO TROLLEY	18,8 / 35,2 / 54,0 m/min PROGRESSIVO - PROGRESSIVE - ПРОГРЕССИВНЫЙ	P = 3,6 kW
	TRASLAZIONE TRASLATION	18 m/min	P = 2X3 kW

(*) VELOCITÀ REGOLATA AUTOMATICAMENTE
DA SENSORE DI CORRENTE
SPEED AUTOMATICALLY CONTROLLED
BY A CURRENT SENSOR
VITESSE RÉGLÉE AUTOMATIQUEMENT
PAR CAPTEUR DE COURANT
AUTOMATISCH DURCH STROMSENSOR
GEREGELTE GESCHWINDIGKEIT
СКОРОСТЬ АВТОМАТИЧЕСКИ
РЕГУЛИРУЕТСЯ ДАТЧИКОМ ТОКА



PESI E INGOMBRI












PACKING LIST / LISTE DE COLISAGE / GEWICHT UND ABMESSUNGEN / ВЕС И ГАБАРИТНЫЕ РАЗМЕРЫ

Pos. Item	Pezzi Pieces	Denominazione Description	Schizzo Sketch	Dimensioni Dimensions			Peso Weight	
				L	W	H	Uni t	Total
1	1	Elemento di freccia Jib element Elément deèche Elemento de flecha Элемент стрелы	n° 1 	11,960	1,200	2,460	2021	-
	1		n° 2 	6,110	1,200	2,070	770	-
	1		n° 3 	6,100	1,200	2,070	715	-
	1		n° 4 	6,070	1,200	1,660	570	-
	1		n° 5 	6,030	1,200	1,640	501	-
	1		n° 7 	6,015	1,200	1,620	425	-
	1		n° 8A 	3,090	1,200	1,070	190	-
	1		n° 8B 	3,090	1,200	1,070	190	-
	1		n° 9 	5,985	1,200	1,070	318	-
	1		Puntale freccia Jib point Elément pointe Puntal de flecha Наконечник стрелы		2,860	1,200	1,070	185
2	1	Controfreccia girevole, argano di sollev., quadro elettrico, carrello freccia etc. Counterjib-tournable, hoisting winch, trolley jib, electrical box etc. Contrefleche tournante, treuil de levage, chariot de fleche, armoire électrique etc. Contraflecha giratorio, cabrestante de elevación, cuadro eléctrico, carro flecha, etc. Контрстрела вращения, подъем. лебедка, электрощит, тележка стрелы и т. д.		11,900	2,230	2,550	6885	-
	1	Controfreccia girevole, argano di sollev., quadro elettrico, carrello freccia, cabina Counterjib-tournable, hoisting winch, access balcony, trolley jib, electrical box, cabin, etc. Contrefleche tournante, treuil de levage, chariot de fleche, armoire électrique, cabine Contraflecha giratorio, cabrestante de elevación, cuadro eléctrico, carro flecha, cabina Контрстрела вращения, подъемная лебедка, электрощит, тележка стрелы, кабина		11,900	3,380	2,550	7480	-
3	1	Controfreccia girevole, argano di sollev., quadro elettrico, carrello freccia, cabina, elem. portablocchi Counterjib-tournable, hoisting winch, access balcony, trolley jib, electrical box, terminal element Contrefleche tournante, treuil de levage, chariot de fleche, armoire électrique, cabine et élément terminal Contraflecha giratorio, cabrestante de elevación, cuadro eléctrico, carro flecha, cabina, portablocques Контрстрела вращения, подъемная лебедка, электрощит, тележка стрелы, кабина, блокодержатель		13,500	3,380	2,550	8030	-
4	4	Blocchi di contrappeso Counterweight block Contre-poids Bloques de contrapeso Блоки противовеса	 A99+3	1,430	0,265	2,800	2130	8520
	3		 B99+3	1,430	0,210	2,800	1680	5040



PESI E INGOMBRI

PACKING LIST/ LISTE DE COLISAGE / GEWICHT UND ABMESSUNGEN / ВЕС И ГАБАРИТНЫЕ РАЗМЕРЫ

Pos. Item	Pezzi Pieces	Denominazione Description	Schizzo Sketch	Dimensioni Dimensions			Peso Weight		
				L	W	H	Uni t	Total	
5	-	Elemento di torre Tower element Elément de mature Elemento de torre Башенный элемент		2,950	1,700	1,500	1400	-	
6	-			4,425	1,700	1,500	1590	-	
7	-			5,900	1,700	1,500	2155	-	
8	-			11,800	1,700	1,500	3870	-	
9	1	Tronchetto di fondazione Expandable foundation element Elément a sceller Tronco de fundación Ствол основания		1,465	1,780	1,780	780	-	
10	1	Trave principale della crociera di base Base main beam Poutre de chassis de base Viga principal de la cruceta de base Главная балка крестовины основания		4,5x4,5 mt	6,530	0,710	0,760	2450	-
				3,8x3,8 mt	5,535	0,710	0,760	1460	-
11	2	Semitrave della crociera di base Half base beam Semipoutre de chassis de base Media viga de la cruceta de base Полубалка крестовины основания		4,5x4,5 mt	3,200	0,590	0,770	1090	2180
				3,8x3,8 mt	2,620	0,590	0,770	940	1880
12	4	Blocco di appoggio Concrete pad Sabot en béton Bloque de apoyo Опорный блок		3,600	0,800	0,600	3925	15700	
13	2	Bilancino di traslazione folle Driving bogie Boggie fou Balancin de traslación loco Не приводной балансир для горизонтального перемещения		1,080	0,230	0,515	416	832	
14	2	Bilancino di traslazione motorizzato Driven bogie Boggie motorisée Balancin de traslación motorizado Приводной балансир горизонтального перемещения		1,550	0,500	0,515	535	1070	
15	-	Blocco di zavorra Base ballast block Lest de base Bloque de lastre Блок балласта		3,600	1,200	0,300	2950	--	



